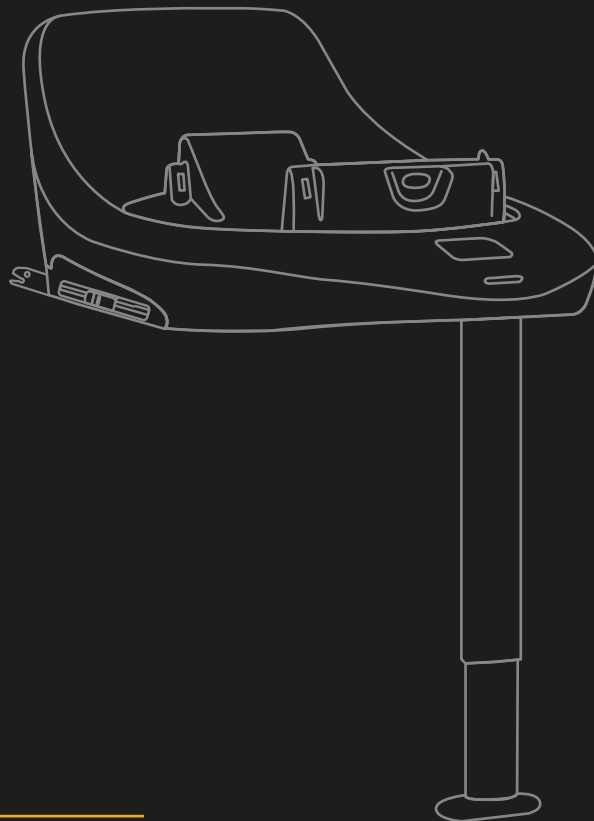


# EVO SPIN



**i-Size Compliant**

---

40-87cm ≤ 13kg

**Base  
Instruction Manual**

Universal Belted 



Car Installation

---

4



Using with Child Car Seat

---

10



Uninstallation of Child Car Seat

---

13



Uninstallation of the Base

---

14



Washing

---

16



Part List

---

17

Base is a rotating car seat base that complies with the UN Regulation No. 129, aims at increasing children safety in car by promoting ISOFIX installation, by supporting rearward-facing travel up to minimum 15 months, by improving protection for head and neck. To learn more on i-Size, please connect on the website [www.mee-go.co.uk](http://www.mee-go.co.uk)  
Category of your car seat base: i-Size (40-87 cm – from birth till 15 months)  
Position of your car seat base: rearward facing



## Does Base fit your car?

Base is an ISOFIX system and approved to Regulation No. 129 and fits in most vehicles equipped with ISOFIX and on all i-Size compatible vehicle seating positions. This car seat base is installed by connecting the two ISOFIX connectors in the anchorage ISOFIX points of the vehicle and by unfolding the support leg completely and placing it in the most forward position.

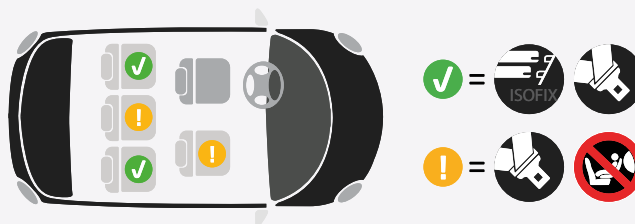
Base ISOFIX system gives you:

Easier and quicker installation of car seats: without a seat belt going through it.

Reinforced safety: fixed to vehicle's chassis for a better restraint in the event of an impact and visual and audible indicators to ensure a correct installation.

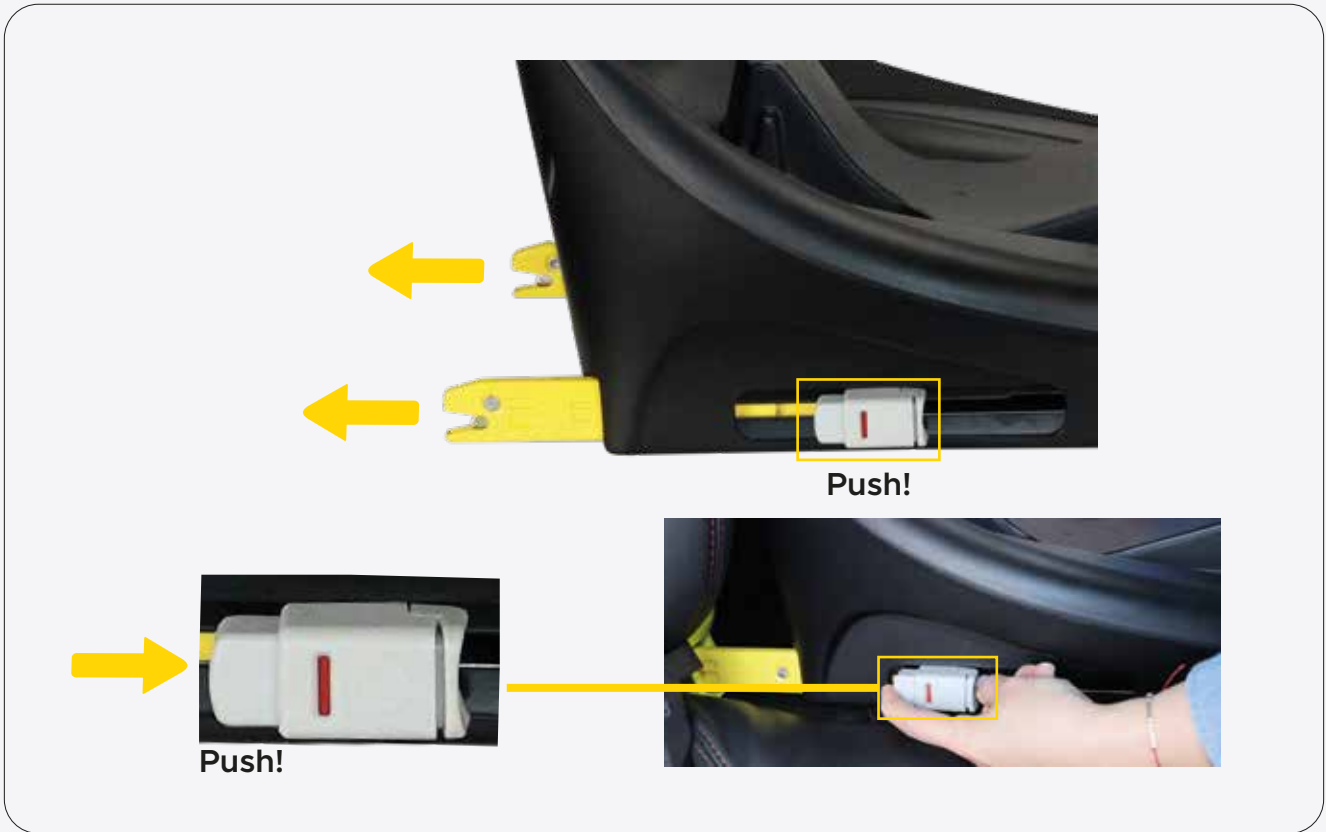
This child restraint is classified for “Universal” use and is suitable for fixing into the seat position of the following cars:

IMPORTANT: For a complete list of cars, please visit [www.mee-go.co.uk](http://www.mee-go.co.uk)

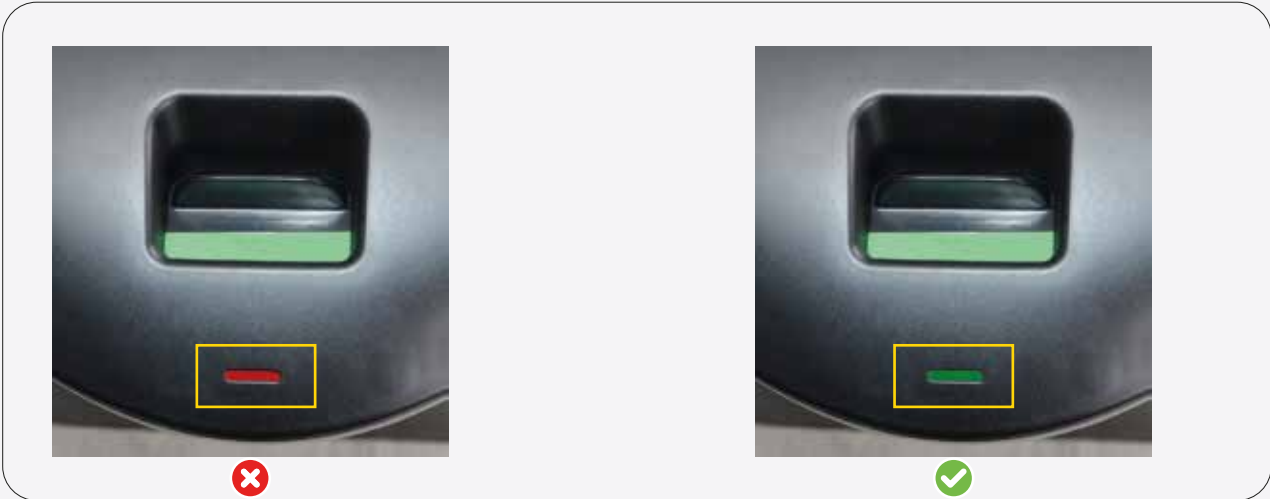


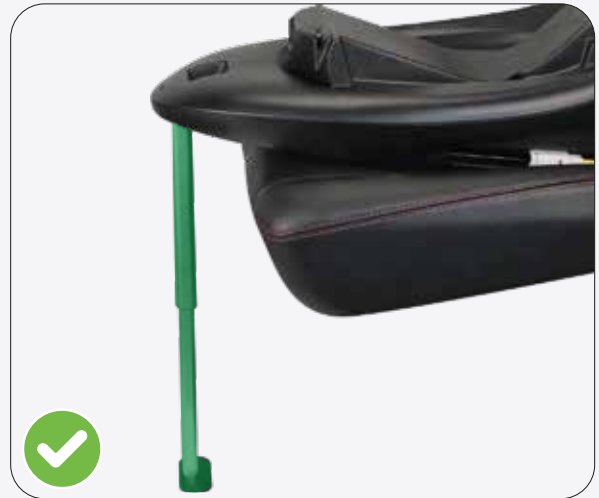
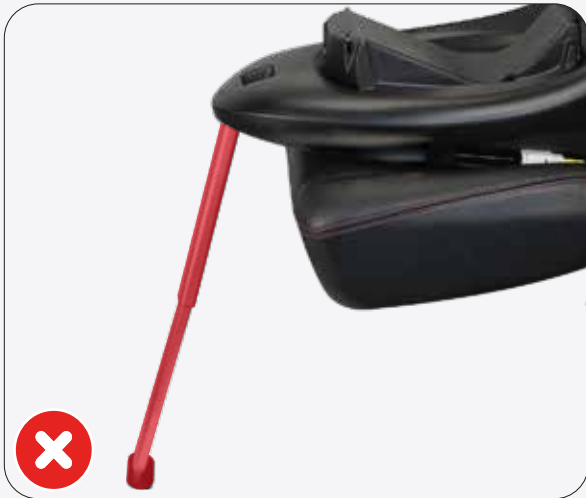


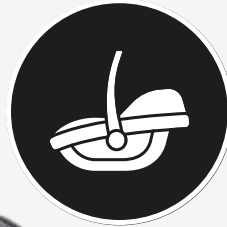




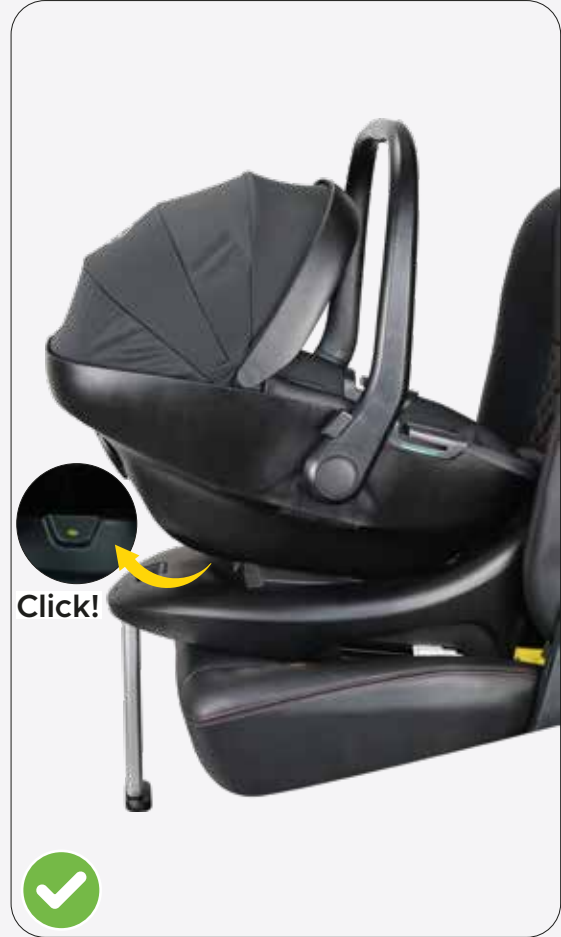










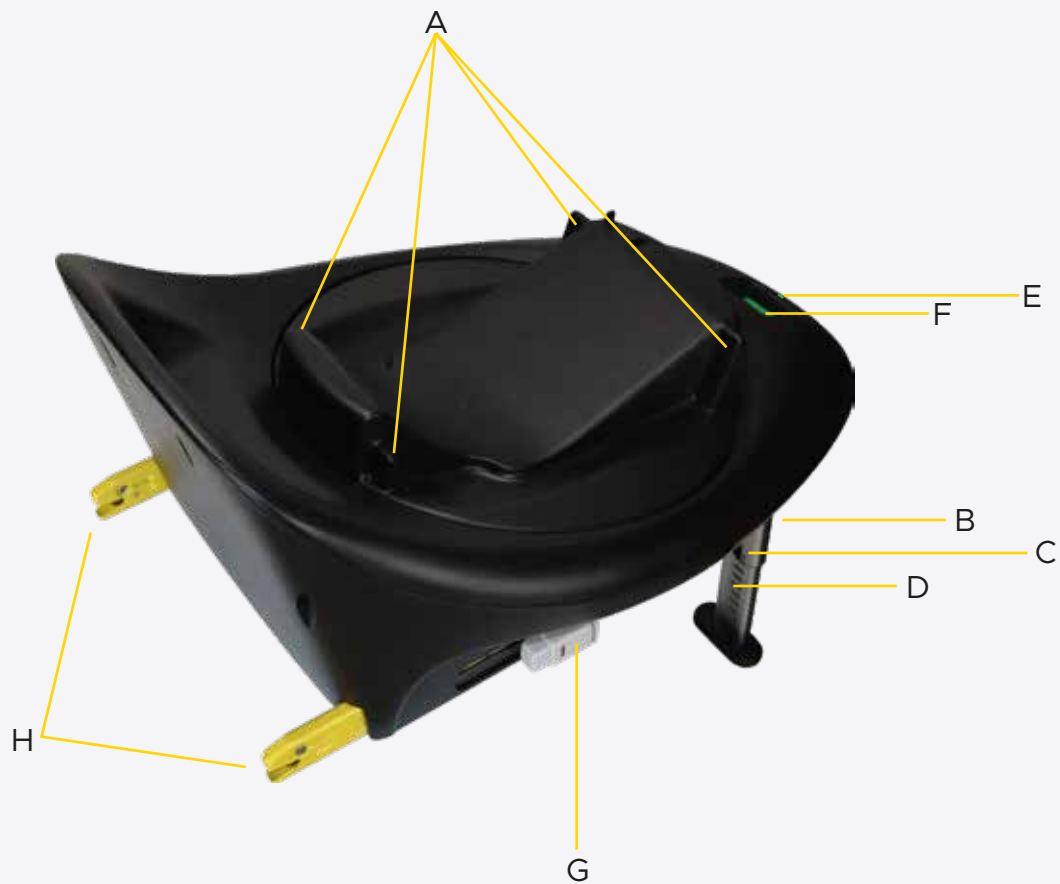














- A - Anchor points for securing seat
- B - Support leg
- C - Adjuster button for support leg
- D - Support leg height adjustment rack
- E - Support leg indicator for correct installation
- F - Rotation lever and Indicator car seat locked on base
- G - ISOFIX release button with indicator for correct installation
- H - ISOFIX connector L+R

## **SAFETY**

- The car seat base is developed for an intensive use of approximately 15 months.
- When installing the car seat base, spaces between the base and the vehicle seat are possible depending on the position of the anchorage points within the vehicle.

WARNING: Install the car seat base only on a forward facing vehicle seat.

CARE: The base can be cleaned using a wet cloth.

## **Compatible Cars**

- If your vehicle doesn't have an I-Size seating position, please check the vehicle type list that is included whether the installation is allowed.
- If your vehicle doesn't have an I-Size seating position, please check the vehicle if your car is named on the typelist. Only then an installation with ISOFIX and the support leg is approved.

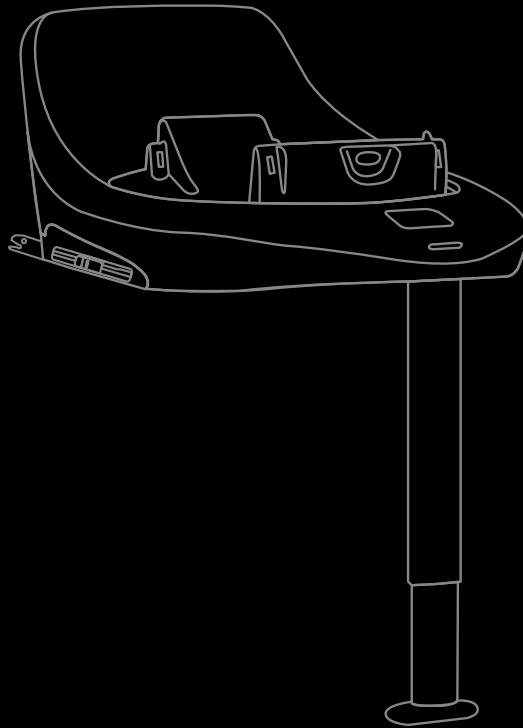
## **WARNING**

- Being named on this list does not guarantee, however that your car is equipped with ISOFIX.
- Depending on the model of your car ISOFIX may only be available optionally. Please check if your vehicle is equipped with ISOFIX anchorage points before you purchase the base.
- Do not use the base in front seats with activated front airbag! Check the manual of your vehicle manufacturer.
- If there are storage compartments in the footwell, please follow the vehicle manufacturer's guidance in relation to using children's seats with a support leg.

# EVO SPIN

We Value Your Beloved...

---



**i-Size Compliant**



**Mee-go Ltd**

Unit 3A, Victoria Mills

Mill Street, Dewsbury

West Yorkshire

United Kingdom WF12 9AQ



[www.mee-go.co.uk](http://www.mee-go.co.uk)