

# mee-go<sup>®</sup>

## EVO SPIN CAR SEAT



---

40-87cm ≤ 13kg

## Child Car Seat Instruction Manual

Universal Belted 



Carrying Handle

4



Installation With Car Seat Belt

7



Placing the Child

11



Stroller & Car Seat

17



Removing & Washing the Fabric

19



List of Parts

26

This car seat is a Universal Belted Enhanced Child Restraint System. It is approved according to UN Regulation No. 129, for use primarily in “Universal seating positions” as indicated by vehicle manufacturers in the vehicle user’s manual. If in doubt, consult either the Enhanced Child Restraint System manufacturer or the retailer. To learn more on i-Size, please connect on the website **[www.mee-go.co.uk](http://www.mee-go.co.uk)**

Category of your car seat: Universal Belted (40 cm-87 cm – up to approx. 15 months)

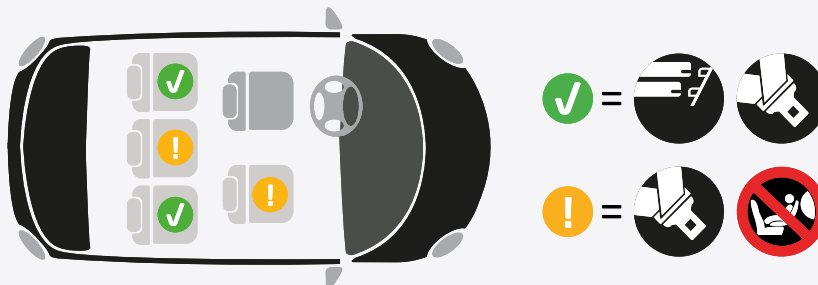
Position of your car seat: rearward facing



This car seat can be installed with its rotatable ISOFIX base. Please make sure you read the user manual of this base carefully. Alternatively, it can be installed by using the 3-point safety belt of your car.

This child restraint is classified for “Universal” use and is suitable for fixing into the seat position of the following cars:

IMPORTANT: For a complete list of cars, please visit **[www.mee-go.co.uk](http://www.mee-go.co.uk)**





### Carrying handle

1- Driving position

2- Carrying position

3- Release and installation position for child

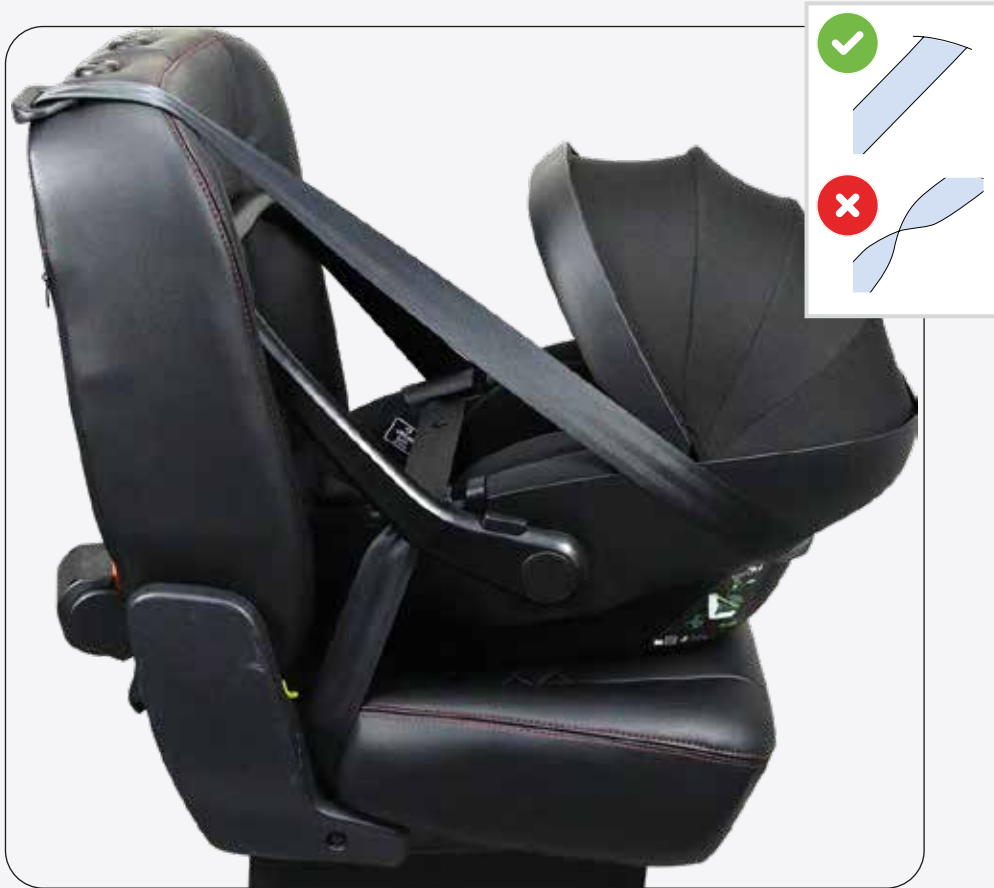




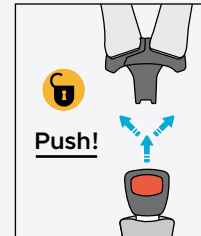


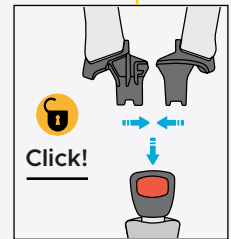
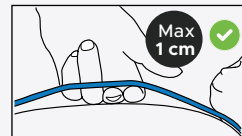






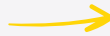




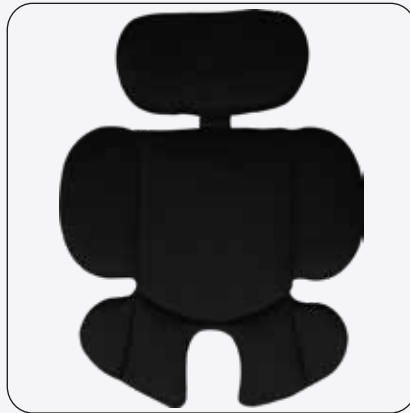




$\leq 75\text{cm}$



$> 75\text{cm}$

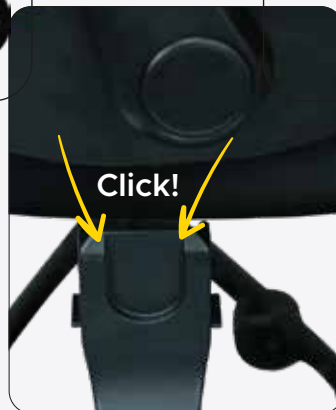
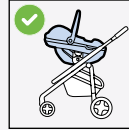




**Pull!**











Remove the fabric & washing

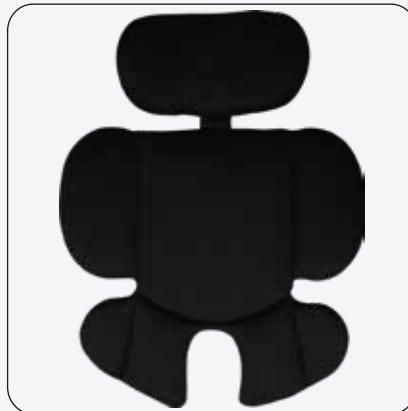




Remove the fabric & washing



→  
P16





Remove the fabric & washing





Remove the fabric & washing





Remove the fabric & washing





Remove the fabric & washing





Remove the fabric & washing







- A - Carrying handle
- B - Sun canopy (built-in)
- C - Push buttons for carrying handle adjustment (L+R)
- D - Belt hooks for lap part of belt (L+R)
- E - Belt buckle with belt pad
- F – Cover
- G - Newborn inlay
- H - Easy-in shoulder belts with removable belt pads
- I - Stroller & base release button
- J - Height adjustable headrest
- K - Belt hook for shoulder part of belt



## SAFETY

- Do not leave your child unattended in the car. With an outside temperature of 20 degrees the car interior heats up in 20 minutes to 40 degrees Celsius which causes a risk.
- The car seat can be rotated and slided in and out of the car by installing it on rotative base. It helps you to get your child in and out of the vehicle easily.
- When the car safety belt is used, make sure the car safety belt buckle runs in a straight line and stays below the belt hook of the car seat.
- The car safety belt must be threaded tight along all green markings. For a proper installation, check the instruction in this manual and the sticker on the side of the car seat.
- Only use a forward-facing seat that is fitted with a 3-point safety belt that complies with the ECE R16 standard.
- When the child restraint is installed in the maximum rearward facing position, it may not fit in all approved vehicles. Please check that all possible positions of the car seat (recline positions and headrest adjustment) fit in your car.

**WARNING:**

- Install the car seat only rearward facing in the car on a forward facing vehicle seat.
- The car seat must always be locked in the rearward facing position when travelling. Do NOT travel when the car seat is rotated to a lateral (loading) position or to any other unlocked intermediate position.

**Car seat and your baby**

- Make sure you can fit no more than one finger between the harness and your baby (1cm). If there is more space than 1 cm, tighten the harness belt further.
- Make sure the headrest is adjusted to the proper height.
- Make sure that the shoulder harness belts are at the correct height. The shoulder harness belts should be on or just below the baby's shoulders.
- The newborn inlay included in your car seat is exclusively for use with the car seat and plays an integral part in the safety of the restraint system for your child from 40 to 75 cm. The newborn inlay is removable and the cover can be taken off for washing; it is essential to place it back again where it belongs and only use this official only use this official new born inlay newborn inlay.
- Only use the newborn inlay of the car seat until your baby exceeds the 75 cm length limit. Afterwards remove the newborn inlay from the seat.

**WARNING:**

- The rigid items and plastic parts of an ECRS must be so located and installed that they are not liable, during everyday use of the vehicle, to become trapped by a movable seat or in a door of the vehicle.
- The device should be replaced when it has been subject to violent stresses in an accident.
- It is dangerous that making any alterations or additions to the device without the approval of the Type Approval Authority, and not following closely the installation instructions provided by the child restraint manufacturer.
- The chair should be kept away from sunlight, otherwise it may be too hot for the child's skin.
- Any luggage or other objects liable to cause injuries in the event of a collision shall be properly secured.
- The ECRS must not be used without the cover. the ECRS cover should not be replaced with any other than the one recommended by the manufacturer, because the cover constitutes an integral part of the restraint performance.
- Not to use any load bearing contact points other than those described in the instructions and marked in the ECRS.

**WARNING:**

- Never place the car seat on an elevated surface (such as a table or chair).
- It is prohibited to adjust the seat position while travelling.

**Using car seat**

- When the car seat is installed on a stroller, always make sure to use approved car seat adapters and to secure car seat correctly.
- The height of the headrest and the shoulder harness can be set simultaneously into different positions. Pull the headrest adjustment strap and meanwhile, pull up or push down the headrest until it's in the correct position.

**CARE**

- The cover, inlay, belt pads and sun canopy of the car seat can be removed for washing. The sun canopy needs to be removed before washing. The harness webbing can be cleaned by using a wet cloth.

# mee-go<sup>®</sup>

EVO SPIN CAR SEAT



We Value Your Beloved...

---



Mee-go Ltd

Unit 3A, Victoria Mills

Mill Street, Dewsbury

West Yorkshire

United Kingdom WF12 9AQ



[www.mee-go.co.uk](http://www.mee-go.co.uk)